

HPS-METAL HALIDE

1200 Series *Rustproof Vandal-Resistant Wall/Ceiling Luminaire*
12" Square *150 Watts Maximum*

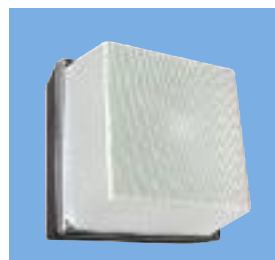
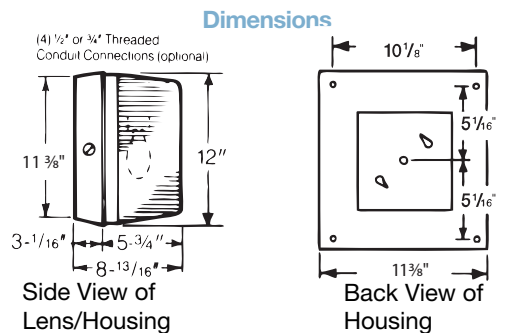
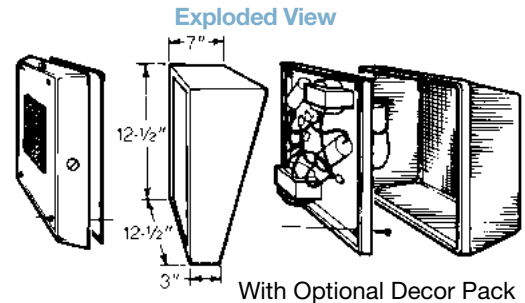


Designed for indoor/outdoor use where efficiency and style are as important as endurance to abuse by environmental elements or vandalism. Engineered with materials offering the **highest resistance to rust, corrosion, and impact**. The housing is totally nonconductive, insuring more safety to the end user. Smooth exterior lens allows ease of cleaning, clear prismatic interior assures optimal lumen output, rounded corners for increased impact strength and safety. Ideally suited for schools, motels, apartments, parking areas; and commercial, industrial, and government establishments.

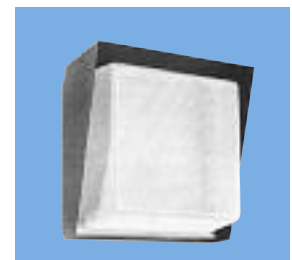


Specifications

- Lens:** Injection molded of UV-stabilized Clear Prismatic polycarbonate. Average thickness is 1/8". Smooth exterior surface for ease of cleaning, and rounded corners for increased impact strength and safety.
- Base Plate:** Rustproof .080" 5052 H-32 tempered marine-grade aluminum.
- Housing:** Injection molded of UV-stabilized reinforced bronze or white polycarbonate. Rear knockout for supply wire. Available with up to four threaded connections and plugs suitable for 1/2" conduit (specify connection positions).
- Gasket:** Lens gasket and mounting gasket are closed-cell neoprene rubber.
- Socket:** Medium-base high heat phenolic, 4kV pulse rated. Lamp base-up orientation required when luminaire is wall mounted.
- Lamp: (optional)** Medium-base lamp; High Pressure Sodium lamp in 50 (ANSI S68), 70 (ANSI S62), 100 (ANSI S54), and 150 (ANSI S55) watts. Metal Halide in 70 (ANSI M101) and 100 (ANSI M90) watts.
- Ballast:** High Pressure Sodium (HPS) Reactor type Normal Power Factor (NPF) or High Power Factor (HPF) for 120V; HPF for 120/277V Dual Tap or 120/277/347V Triple Tap. Metal Halide NPF for 120V or 277V; HPF for 120V, 277V, and 120/277V Dual Tap or 120/277/347V Triple Tap. Quad Tap 120/208/240/277V for 70 MH and 100 MH.
- Hardware:** Four stainless-steel 8-32 phillips truss head screws or tamperproof screws (TORX® type) attach lens to base plate.



Wall Luminaire With Clear Prismatic Lens



Shown With Optional Decor Pack

UL, C-UL Listed For Wet Locations.

All polycarbonate components meet Underwriters Laboratories 746C tests for polymeric material and carry a flammability rating of 94HB or better on lenses and the superior 94-5V rating on housings.

Luminaire Type _____
 Catalog Number _____
 Job Name _____
 Approval _____

WF Harris Lighting

Innovative Lighting Designs Since 1970

P.O. Box 5023, Monroe, NC 28111-5023, USA
 (704) 283-7477 • (704) 283-6880(FAX) • (800) 842-9345 (TOLL FREE)
 www.wfharris.com • e-mail: info@wfharris.com

"A Live Operator Company Standing Ready to Serve Your Lighting Needs"

HPS-METAL HALIDE

Ordering Information (Fill In Blanks For Complete Catalog Number)

1200	CP						
Model	Housing	Lens Color	Watts-Lamp	Power Factor	Volts	Options	Connections

Model	Housing	Lens Color	Watts/Lamp	Power Factor	Volts	Options	Conduit Connections
1200	HB-Bronze HW-White	CP-Clear Prismatic	50 MH 70 MH 100 MH 50 HPS 70 HPS 100 HPS 150 HPS ⁷ 150 MH ⁶	NPF HPF	120 277 ¹ 120/277 ³ 120/277/347 ^{3,4} 120/208/240/277 ⁵	PC-Photo Control ² LP-Lamp SHD-Bronze Aluminum Shroud QRS-Quartz Restrike System QRSLP-Quartz Restrike System With 100Q/DC Lamp TPS-Tamperproof Screws FS-Fuse and Holder OCB-Bronze Aluminum Outside Corner Bracket	CRS-Right Side CLS-Left Side CT-Top CB-Bottom C4-All (Positions Based on Facing Fixture)

Accessories (Order Separately)

TPT-Tamperproof Screwdriver

¹ HPS 277V are dual tap only

² Specify Voltage

³ HPF Ballast Only

⁴ Not Available with 50 HPS or 50 MH

⁵ Available for 70 MH and 100 MH only

⁶ Not available in 120V/277V

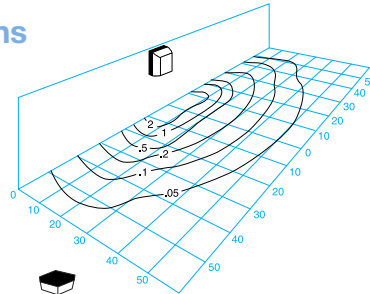
⁷ Concrete or metal ceiling use only. Not for use on insulated ceilings.

Lamp Performance

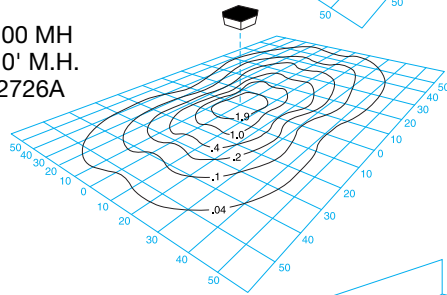
	50 Watt MH	70 Watt MH	100 Watt MH	50 Watt HPS	70 Watt HPS	100 Watt HPS	150 Watt HPS
Input Watts	69W	90W	129W	66W	91W	130W	188W
Lumen Output	4,000	5,900	8,800	4,000	6,300	9,500	16,000
Lamp Life (Hours)	10,000	10,000	10,000	24,000	24,000	24,000	24,000
Min. Starting Temperature	-20°F/-30°C	-20°F/-30°C	-20°F/-30°C	-40°F/-40°C	-40°F/-40°C	-40°F/-40°C	-40°F/-40°C

Light Distribution Patterns

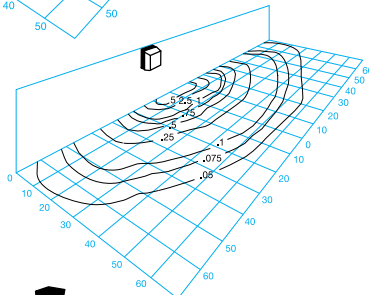
Model 1200-CP-100 MH
Wall Mounted 10' M.H.
Test Report No. 32723A



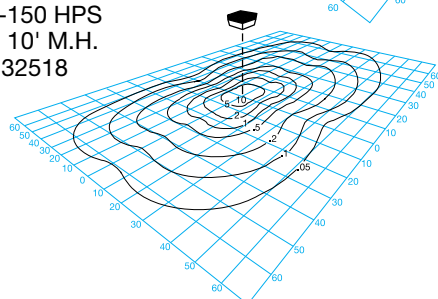
Model 1200-CP-100 MH
Ceiling Mounted 10' M.H.
Test Report No. 32726A



Model 1200-CP-150 HPS
Wall Mounted 10' M.H.
Test Report No. 30215



Model 1200-CP-150 HPS
Ceiling Mounted 10' M.H.
Test Report No. 32518



Conversion Tables

Lamp	Lamp Conversion Factor	Mounting Height	Height Conversion Factor
100 MH	1.00	8'	1.56
70 MH	.66	9'	1.23
50 MH	.40	10'	1.00
150 HPS	1.00	11'	.83
100 HPS	.59	12'	.69
70 HPS	.36	14'	.51
50 HPS	.25	16'	.39

Using Conversion Table

TO ADJUST FOOTCANDLES (FC) SHOWN IN DIAGRAMS AT LEFT, USE THE FOLLOWING FORMULA WITH LAMP CONVERSION FACTOR (LCF) AND HEIGHT CONVERSION FACTOR (HCF):

$$FC \times LCF = FC \text{ with alternate lamp}$$

$$FC \times HCF = FC \text{ at alternate height}$$

$$FC \times LCF \times HCF = FC \text{ with alternate lamp at alternate height}$$

Specifications Subject to Change Without Notice

Luminaire is Warranted to be Free of Defects in Materials and Workmanship for One Year From Invoice Date.

LENS, HOUSING, AND ALUMINUM BASE PLATE CARRY A LIFETIME GUARANTEE.

MADE IN USA

WF Harris Lighting

Innovative Lighting Designs Since 1970

P.O. Box 5023, Monroe, NC 28111-5023, USA
(704) 283-7477 • (704) 283-6880(FAX) • (800) 842-9345 (TOLL FREE)
www.wfharris.com • e-mail: info@wfharris.com

Printed in USA
Form 1504
10/08