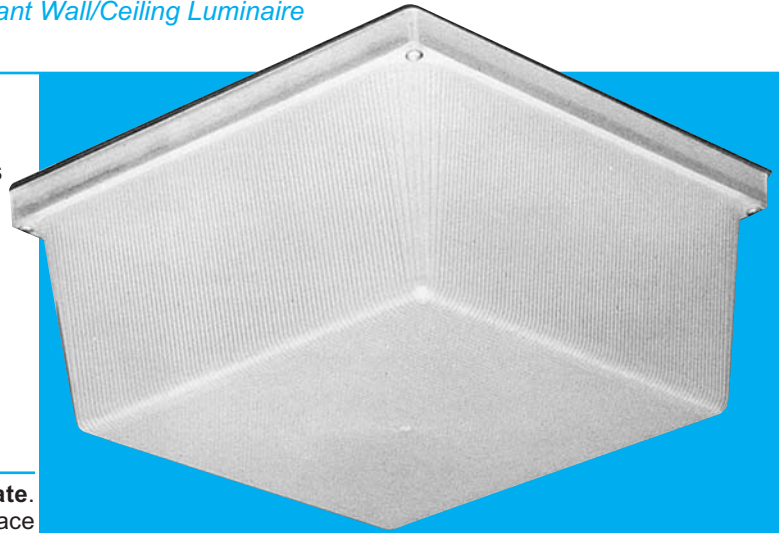


FLUORESCENT



1200 Series *Rustproof Vandal-Resistant Wall/Ceiling Luminaire* *Two 42 Watts Maximum*

Designed for indoor/outdoor use where efficiency and style are as important as endurance to abuse by environmental elements or vandalism. **Rustproof.** Engineered with materials offering the **highest resistance to rust, corrosion, and impact.** Smooth exterior surface for ease of cleaning and rounded corners for added strength and safety. The **polycarbonate** housing is **nonconductive**, insuring more safety to the end user. Ideally suited for schools, motels, apartments, parking areas and commercial establishments.



Specifications

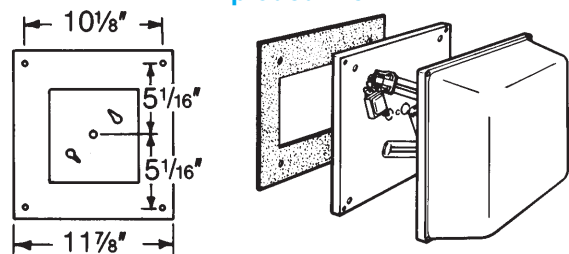
Lens:	Injection molded of UV-stabilized polycarbonate . Average thickness is $\frac{1}{8}$ ". Smooth exterior surface for ease of cleaning and rounded corners for added strength and safety.
Base Plate:	Rustproof .080" 5052 H-32 tempered marine-grade aluminum.
Housing: (optional)	Injection molded of UV-stabilized reinforced white or bronze polycarbonate . Rear knockout for supply wire. Available with up to four threaded connections and plugs suitable for $\frac{1}{2}$ " conduit. (Mounting hardware not included.)
Gasket:	Closed-cell neoprene rubber in $\frac{1}{8}$ " thickness creates a tight seal against moisture and contaminants.
Socket:	Four-pin and two-pin type. Leads insulated for 105°C.
Lamp: (optional)	High-efficiency PL, PLT, 2D, and FL (circline) lamps offer up to 10 times longer life and 70% energy savings over incandescent lamps.
Ballast:	Self-start preheat Normal Power Factor or High Power Factor for 120V or 277V. Optional cold weather (0°F) ballast(s) for PL Lamps. Optional Class P ballast for indoor use. 18W, 26W, 32W, and 42 Watt are standard 120V through 277V, 50/60Hz world class universal electronic, 0°F or better starting temperature.
Hardware:	Four stainless steel 8-32 phillips truss head screws or tamperproof screws (TORX® type) attach lens to base plate. Mounting hardware included.

UL and C-UL Listed For Wet Locations

All polycarbonate components meet Underwriters Laboratories 746C tests for polymeric material and carry a flammability rating of 94HB or better on lenses and the superior 94-5V rating on housings.

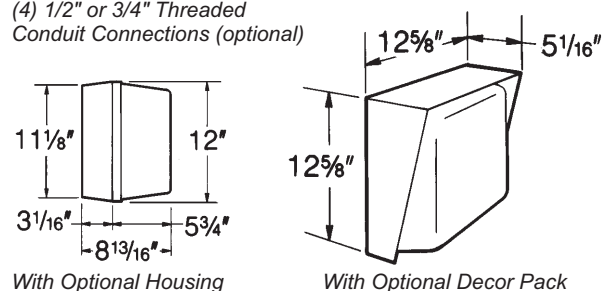
Luminaire Type _____
 Catalog Number _____
 Job Name _____
 Approval _____

Exploded View



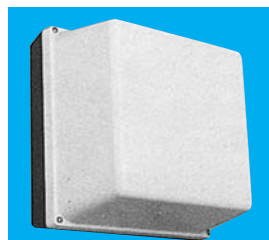
Dimensions

(4) $\frac{1}{2}$ " or $\frac{3}{4}$ " Threaded Conduit Connections (optional)

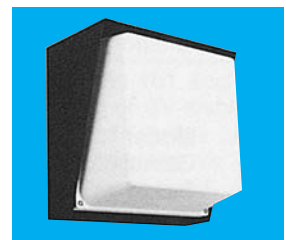


With Optional Housing

With Optional Decor Pack



Shown With Optional Housing



Shown With Optional Decor Pack

WF Harris Lighting

Innovative Lighting Designs Since 1970

P.O. Box 5023, MONROE, NC 28111-5023, USA
 (704) 283-7477 • (704) 283-6880 (FAX) • (800) 842-9345 (TOLL FREE)
 www.wfharris.com • e-mail: info@wfharris.com

"A Live Operator Company Standing Ready to Serve Your Lighting Needs"

FLUORESCENT

Ordering Information (Fill In Blanks For Complete Catalog Number)

Model	Lens Color	Housing Color	Watts/Lamp	Power Factor	Volts	Options	Conduit Connection
Model	Lens Color	Housing Color	Watts/Lamp	Power Factor	Volts	Options	Conduit Connections
1200	CP-Clear Prismatic	HW-White	2-13 PL	NPF	120	LP- Lamp	CRS-Right Side
	OW-Opal White	HB-Bronze	22 FL	HPF	277	PC-120- Photo Control for 120V ²	CLS-Left Side
			2-22 FL		120-277*	PC-277- Photo Control for 208V, 240V, 277V (Specify Voltage)	CT-Top
			2-22 PLC*			FS-Fuse and Holder	CB-Bottom
			2-18 PLT*			SW-On/Off Switch ^{1,2}	C4-All Four Sides
			2-26 PLT*			TPS-Tamperproof Screws	(Positions Based on Facing Luminaire)
			2-32 PLT* ³			CW2-0°F Ballast for PL Lamps	
			2-42 PLT* ³			DPW-White Marine-Grade Aluminum Decor Pack	
			28-2 D*			DPZ-Bronze Marine-Grade Aluminum Decor Pack	
						SR-Photo Control Shield - Round ²	
					SRH-Photo Control Shield - Half Round ²		
					P-One Class P Ballast (magnetic) for indoor use		
					P2-Two Class P Ballasts (magnetic) for indoor use		
					PS-Painted Bronze 4 sides on Clear Lens		
					GCO-HD-Heavy Duty Grounded Convenience Outlet ^{1,2}		
					GRAPHICS-Numbers, Letters, Symbols, Logos		
					12H__-Housing (Specify Color)		
					W-White B-Bronze		

Accessories

(Order Separately)

TPT-Tamperproof
Screwdriver



¹ Dry Locations Only

² Requires 12H Housing

³ Includes 12H Housing

*Electronic

Fluorescent Lamp Performance

	22 Watt Circline	2-22 Watt Circline	2-13 Watt Twin PL	2-26 Watt PLC	2-18 Watt PLT	2-26 Watt PLT	2-32 Watt PLT	2-42 Watt PLT	28 Watt 2-D
Input Watts	27W	54W	34W	52W	36W	52 W	64W	84W	28W
Lumen Output	1,150	2,300	1,650	3,600	2,400	3,600	4,800	6,400	2,050
Lamp Life (Hours)	12,000	12,000	10,000	10,000	110,000	10,000	10,000	10,000	10,000
Min. Starting Temperature	50°F	50°F	32°F	0°F	0°F	0°F	0°F	0°F	14°F

Conversion Tables

Lamp	Lamp Conversion Factor (LCF)	Mounting Height	Height Conversion Factor (HCF)
Ceiling Mount			
2-13 PL	0.90	6'	1.77
22 FL	0.50	8'	1.00
Wall Mount			
2-22 FL	1.11	10'	0.64
22 FL	0.56	12'	0.45
2-26 PLC	1.50		
2-18 PLT	1.00		
2-26 PLT	1.50		
2-32 PLT	2.00		
2-42 PLT	2.66		
28 2D			

Using Conversion Tables

TO ADJUST FOOTCANDLES (FC) SHOWN IN DIAGRAMS AT LEFT, USE ONE OF THE FOLLOWING FORMULAS WITH LAMP CONVERSION FACTOR (LCF) AND HEIGHT CONVERSION FACTOR (HCF):

FC x LCF = FC with alternate lamp

FC x HCF = FC at alternate height

FC x LCF x HCF = FC with alternate lamp at alternate height

Specifications Subject to Change Without Notice.

Luminaire is Warranted to be Free of Defects in Materials and Workmanship for One Year From Invoice Date.

LENS, HOUSING, AND ALUMINUM BASE
PLATE CARRY A LIFETIME GUARANTEE.

MADE IN
USA

WF Harris Lighting

Innovative Lighting Designs Since 1970

P.O. Box 5023, Monroe, NC 28111-5023, USA
(704) 283-7477 • (704) 283-6880 (FAX) • (800) 842-9345 (TOLL FREE)

www.wfharris.com • e-mail: info@wfharris.com

Printed in USA

Form 1507

09/07