

# EMERGENCY FLUORESCENT

## 300-Emergency Series *Rustproof Vandal-Resistant Wall/Ceiling Luminaire 32 Watts Maximum*



Designed for use where a stylish, vandal-resistant luminaire is required to operate efficiently during normal operation and/or to provide a reliable back-up power source during a power failure. Includes a maintenance-free battery with test switch and charging indicator light. Engineered with components and materials offering the **highest resistance to rust, corrosion, and impact**. The housing is totally non-conductive, insuring more safety to the end user. Ideally suited as security lighting for schools, motels, hospitals, condominiums; and industrial, commercial, and government buildings.

### Specifications

**Lens:** Injection molded of UV-stabilized **polycarbonate**. Average thickness is  $\frac{1}{8}$ ". Smooth exterior surface for ease of cleaning.

**Base Plate:** **Rustproof** .080" 5052 H-32 tempered marine-grade aluminum.

**Housing:** Injection molded in black, white, or bronze UV-stabilized, reinforced **polycarbonate**. Rear knockout for supply wire. Available with two threaded connections and plugs suitable for  $\frac{1}{2}$ " conduit.

**Gasket:** Closed-cell neoprene rubber in  $\frac{1}{8}$ " thickness creates a tight seal against contaminants and moisture.

**Socket:** Compact fluorescent with leads insulated for 105°C.

**Lamp:** High-efficiency PL twin tube, quad tube, and PLT lamps offer up to ten times longer life and 70% energy savings over comparable incandescent lamps. **PLT 0°F minimum starting temperature.**

**Ballast:** Class P self-start preheat type in Normal Power Factor or High Power Factor 120 or 277 volts. PLT Electronic is High Power Factor 277 volts only.

**Battery:** Nickel cadmium battery is maintenance free with a life expectancy of 7-10 years and the industry standard 90-minute emergency operating time. Exterior indicator light reveals that battery is charging during normal operation of luminaire. During power interruption, luminaire will switch to battery operation. When AC power is restored, the lamp(s) are switched back to the ballast and the battery is recharged within 24 hours. Note: Two lamp luminaires can be wired to operate independently. (see options).

**Hardware:** Four stainless-steel 8-32 phillips truss head screws or tamperproof screws (TORX® type) attach lens to base plate. Mounting hardware included.

**Mounting:** Ceiling or **vertically with lamp base up**.

### UL Listed

All polycarbonate components meet Underwriters Laboratories 746C tests for polymeric material and carry a flammability rating of 94HB or better on lenses and the superior 94-5V rating on housings.

Luminaire Type \_\_\_\_\_

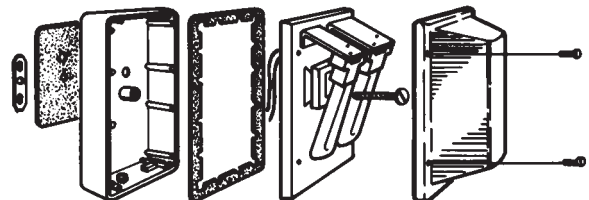
Catalog Number \_\_\_\_\_

Job Name \_\_\_\_\_

Approval \_\_\_\_\_

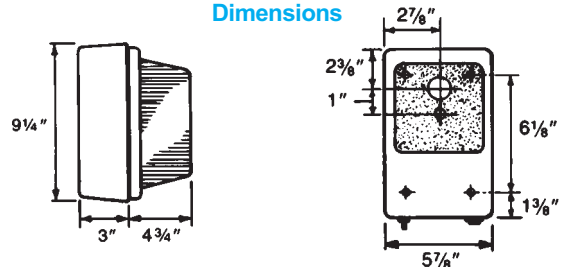


Exploded View



(Battery and charging unit are located on Reverse Side of Base Plate)

Dimensions



Shown With Clear Prismatic Lens

## WF Harris Lighting

Innovative Lighting Designs Since 1970

P.O. Box 5023, Monroe, NC 28111-5023, USA

(704) 283-7477 • (704) 283-6880 (FAX) • (800) 842-9345 (TOLL FREE)

www.wfharris.com • email: info@wfharris.com

*"A Live Operator Company Standing Ready to Serve Your Lighting Needs"*

# EMERGENCY FLUORESCENT

Ordering Information (Fill In Blanks For Complete Catalog Number)

Model	Lens Color	Housing Color	Watts/Lamp	Power Factor	Volts	Options
<b>Model</b>	<b>Lens Color</b>	<b>Housing Color</b>	<b>Watts/Lamp</b>	<b>Power Factor</b>	<b>Volts</b>	<b>Options</b>
<b>300</b>	<b>CP</b> -Clear Prismatic <b>OW</b> -Opal White	<b>HB</b> -Bronze <b>HK</b> -Black <b>HW</b> -White	<b>9 PL</b> <sup>3</sup> <b>13 QD</b> <sup>4</sup> <b>2-9 PL</b> <sup>4</sup> <b>18 PLT</b> <sup>*1</sup> <b>26 PLT</b> <sup>*1</sup> <b>32 PLT</b> <sup>*1</sup>	<b>NPF</b> <b>HPF</b>	<b>120</b> <b>277</b>	<b>TPS</b> -Tamperproof Screws <b>W</b> -Wet Location <b>FS</b> -Fuse and Holder <b>PC</b> -Photo Control <b>EM (1 or 2 lamp luminaire)</b> - All lamps operate during normal conditions, one lamp operates during emergency <b>EMO (1 lamp luminaire)</b> - One (1) lamp operates during emergency <b>EMO1 (2 lamp luminaire)</b> - One (1) lamp operates under normal conditions, one lamp operates during emergency <b>CT</b> -Conduit Connection on Top <sup>2</sup> <b>CB</b> -Conduit Connection on Bottom <sup>2</sup>

Accessories (Order Separately)

TPT-Tamperproof Screwdriver



\*Electronic

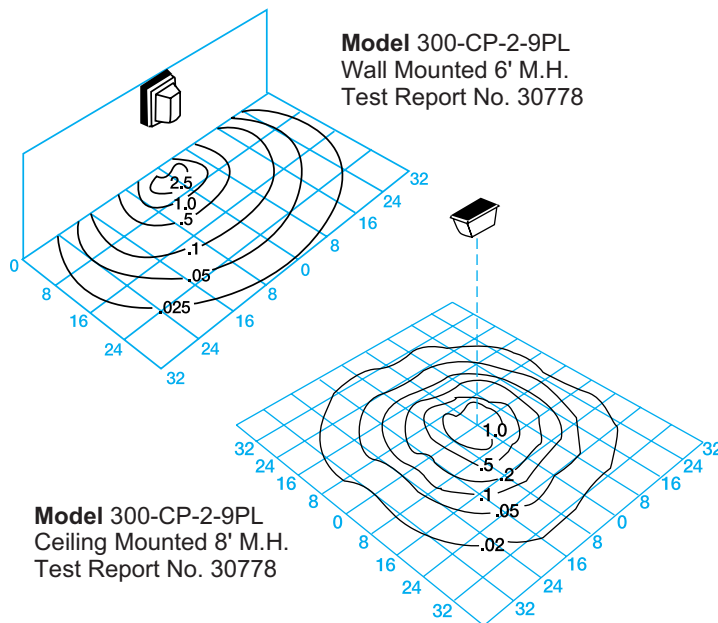
<sup>1</sup>HPF Only

<sup>2</sup>Positions based on facing luminaire

<sup>3</sup>277V available in NPF only

<sup>4</sup>NPF 120V only

## Light Distribution Patterns



## Conversion Table

Lamp	Lamp Conversion Factor (LCF)		Mounting Height	Height Conversion Factor (HCF)	
	Wall Mount	Ceiling Mount		Wall Mount	Ceiling Mount
9 PL	.50	.50	10'	.36	.64
13 PLQD	.75	.75	8'	.56	1.00
2-9 PL	1.00	1.00	6'	1.00	1.77
18 PLT	1.00				
26 PLT	1.50				
32 PLT	2.00				

### Using Conversion Table

TO ADJUST FOOTCANDLES (FC) SHOWN IN THE DIAGRAMS AT LEFT, USE ONE OF THE FOLLOWING FORMULAS WITH LAMP CONVERSION FACTOR (LCF) AND HEIGHT CONVERSION FACTOR (HCF):

- FC x LCF = FC with alternate lamp
- FC x HCF = FC at alternate height
- FC x LCF x HCF = FC with alternate lamp at alternate height

## Fluorescent Lamp Performance

	9 Watts Twin Tube	13 Watts Quad Tube	(2) 9 Watts Twin Tube	18 Watts PLT	26 Watts PLT	32 Watts PLT
Input Watts	11W	17W	22W	18W	26W	32W
Initial Lumen Output	600	860	1,200	1,200	1,800	2,400
EM Lumen Output	475	525	475	300	450	575
Lamp Life (Hours)	10,000	10,000	10,000	10,000	10,000	10,000
Min. Starting Temp. (AC)	25°F	32°F	25°F	0°F	0°F	0°F
EM Batt. Temp. Range	32°F-131°F	32°F-131°F	32°F-131°F	32°F-131°F	32°F-131°F	32°F-131°F

Specifications Subject to Change Without Notice

Luminaire is Warranted to be Free of Defects in Materials and Workmanship for One Year From Invoice Date.

**LENS, HOUSING AND ALUMINUM BASE PLATE CARRY A LIFETIME GUARANTEE.**

MADE IN USA

# WF Harris Lighting

Innovative Lighting Designs Since 1970

P.O. Box 5023, Monroe, NC 28111-5023, USA  
(704) 283-7477 • (704) 283-6880(FAX) • (800) 842-9345(TOLL FREE)

www.wfharris.com • email: info@wfharris.com

Printed in USA

Form 1517

5/07