

INCANDESCENT

300-HZ Series *Rustproof Vandal-Resistant Wall Luminaire*
60 Watts Maximum



An integral reflector allows this version of the Model 300 to be wall mounted horizontally producing a downward, wide-light distribution pattern. Engineered with materials offering the **highest resistance to rust, corrosion and impact**. The **polycarbonate** housing is nonconductive, insuring more safety to the end user. Ideally suited to illuminate building walls and perimeters, landscaping, corridors, traffic areas, and entryways.

Specifications

Lens: Injection molded of UV-stabilized **polycarbonate**. Average thickness $\frac{1}{8}$ ". Smooth exterior surface for ease of cleaning.

Base Plate: **Rustproof** .080" 5052 H-32 tempered marine-grade aluminum.

Housing: (optional) Injection molded in black, white, or bronze UV-stabilized, reinforced **polycarbonate**. Rear knockout, $\frac{3}{4}$ ", for supply wire. Available with up to four $\frac{1}{2}$ " threaded conduit connections and plugs.

Reflector: Formed of anodized aluminum in a hammertone texture projecting 77.7% reflectivity.

Thermal Insulation: One-pound density fiberglass pad controls temperature rise in junction box and surface area.

Gasket: Closed-cell neoprene rubber in $\frac{1}{8}$ " thickness creates a tight seal against moisture and contaminants.

Socket: Medium-base ceramic with nickel-plated copper screw shell, rated 250V, 660W, with leads insulated for 105°C.

Lamp: Uses 60W max. Type A-19 incandescent lamp. Provided by others.

Hardware: Four stainless steel 8-32 phillips truss head screws or tamperproof screws (TORX® type) attach lens to base plate. Mounting crossbar, threaded nipple, and nut are provided.

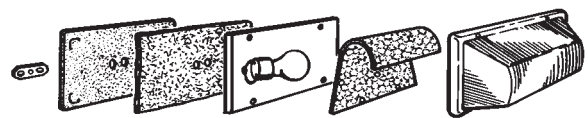
Mounting : Must be mounted horizontally on the wall.

UL Listed: For Wet Locations.

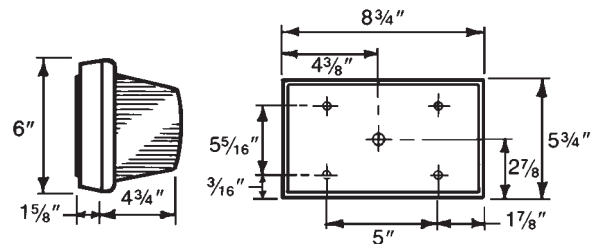
All polycarbonate components meet Underwriters Laboratories 746C tests for polymeric material and carry a flammability rating of 94HB or better on lenses and the superior 94-5V rating on housings.



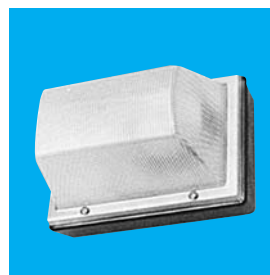
Exploded View



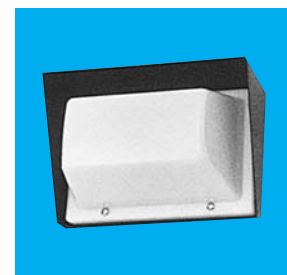
Dimensions



(With Optional Housing)



Shown With
Optional Housing



Shown With
Optional Decor Pack

Luminaire Type _____
Catalog Number _____
Job Name _____
Approval _____

WF Harris Lighting

Innovative Lighting Designs Since 1970

P.O. Box 5023, Monroe, NC 28111-5023, USA

(704) 283-7477 • (704) 283-6880(FAX) • (800) 842-9345(TOLL FREE)

www.wfharris.com • email: info@wfharris.com

INCANDESCENT

Ordering Information (Fill In Blanks For Complete Catalog Number)

Model	Lens	Lamp	Options	Conduit Connections (3H Required)
300-HZ	CP -Clear Prismatic OW -Opal White BZ -Bronze BY -Buglight Yellow A -Amber R -Red G -Green B -Blue (For Official Use Only)	INC (60W MAX) ¹	PC -Photo Control (3B Required) TPS -Tamperproof Screws 3H_ -Housing-Specify Black (K), Bronze (Z) or White (W) and Conduit Connections 3H4_ -Housing With All Four Conduit Connections (Specify Color From Above) GCO -Grounded Convenience Outlet (3H Required)* SW -On/Off Switch (3H Required)* HDPK -Black Aluminum Decor Pack HDPW -White Aluminum Decor Pack HDPZ -Bronze Aluminum Decor Pack GRAPHICS -Vinyl Numbers and Letters	CRS -Right Side CLS -Left Side CT -Top CB -Bottom (Positions Based on Facing Luminaire)

¹Provided By Others

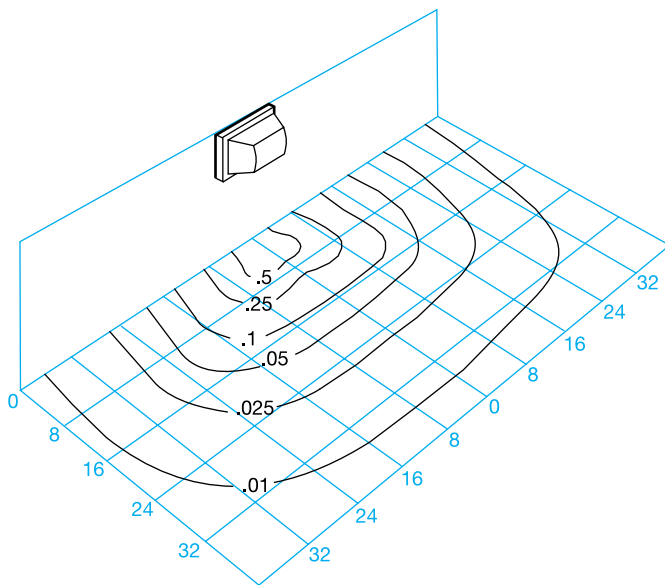
Accessories (Order Separately)
TPT-Tamperproof Screwdriver



*Interior Use Only

Light Distribution Pattern

Model 300-CP-60-INC
 Wall Mounted 8' M.H.



Conversion Table

Mounting Height	Mounting Conversion Factor
6'	1.77
8'	1.00
10'	.64
12'	.45
14'	.32

Using Conversion Table

TO ADJUST FOOTCANDLES (FC) IN DIAGRAM AT LEFT, USE FOLLOWING FORMULA HEIGHT CONVERSION FACTOR (HCF):

$$FC \times HCF = FC \text{ at alternate height}$$

LENS, HOUSING, AND ALUMINUM BASE PLATE CARRY A LIFETIME GUARANTEE.

Specifications Subject to Change Without Notice

Luminaire is Warranted to be Free of Defects in Materials and Workmanship for One Year From Invoice Date.

MADE IN USA

WF Harris Lighting

Innovative Lighting Solutions Since 1970
 P.O. Box 5023, Monroe, NC 28111-5023, USA
 (704) 283-7477 • (704) 283-6880 (FAX) • (800) 842-9345 (TOLL FREE)
 www.wfharris.com • e-mail: info@wfharris.com

Printed in USA
 Form 1523 (R10) 04/05