

INCANDESCENT

500 Series 75 Watts Maximum

550 Series 75 Watts Maximum

600 Series 60 Watts Maximum

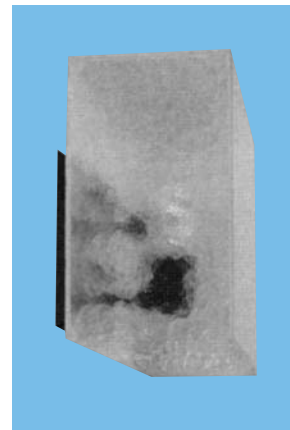
650 Series Two 60 Watts Maximum

700 Series 75 Watts Maximum

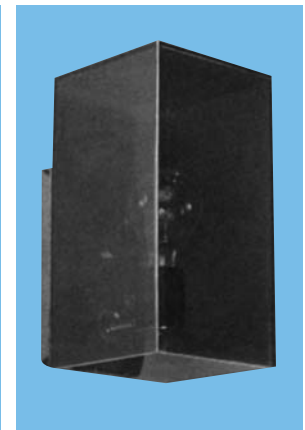
Handcrafted, Rustproof Acrylic Wall or Ceiling Luminaires



Sleek, contemporary design makes these luminaires the natural choices for many architectural applications. Using the finest thermoplastic polymers available, the luminaires are handcrafted with careful precision. Natural UV stabilized acrylic offers the longest life in outdoor exposure. A lens thickness of $\frac{3}{16}$ " enhances impact strength and structural beauty. The construction affords easy installation and maintenance-free service. A variety of configurations, mountings, and lens colors are available.



700-W-FC



600-W-BZ

Specifications

Lens: Standard in $\frac{3}{16}$ " UV-stabilized acrylic. Colors include clear, frosted clear, opal white, and bronze. Handcrafted construction.

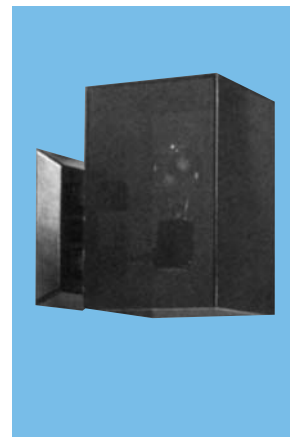
Mounting Base: Injection molded UV-stabilized, noncorrosive and nonconductive black **polycarbonate**. Flush mount luminaires are completely enclosed. All other luminaires are open bottom.

Base Plate: Rustproof .080" 5052 H-32 tempered marine-grade aluminum on flush mount (CF and WF) luminaires.

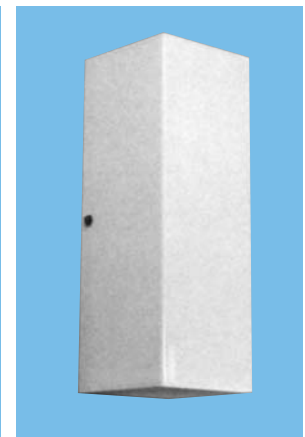
Socket: Medium base ceramic with copper screw shell, rated 250V, 660W with leads insulated for 105°C.

Lamp: Type A-19 (provided by others).

Hardware: Mounting hardware included.



550-WE-BZ



650-WF-OW

UL Listed For Wet Locations.

All acrylic lens components meet Underwriters Laboratories material requirements and carry a flammability rating of 94HB or better on lenses and the superior 94-5V rating on housings.

Luminaire Type _____
Catalog Number _____
Job Name _____
Approval _____

WF Harris Lighting

Innovative Lighting Designs Since 1970

P.O. Box 5023, Monroe, NC 28111-5023, USA
(704) 283-7477 • (704) 283-6880(FAX) • (800) 842-9345(TOLL FREE)
www.wfharris.com • e-mail: info@wfharris.com

"A Live Operator Company Standing Ready to Serve Your Lighting Needs"

INCANDESCENT

Ordering Information (Fill In Blanks For Complete Catalog Number)

Model	Mounting Base	Lens Color	Lamp	Options
500	C-1" Ceiling Reveal	OW-Opal White	INC⁵	CLT-Clear Top Lens
550	CF-Ceiling Flush	CL-Clear		CLB-Clear Bottom of Lens (WF Mounting Only)
600¹	W-1" Wall Reveal	BZ-Bronze		GRAPHICS-Numbers, Symbols, Letters, Logos
650¹	WE-3" Wall Reveal	FC-Frosted Clear		
700¹	WF-Wall Flush			
558^{2,4}				
658^{3,4}				

¹N/A with C or CF Base Mount

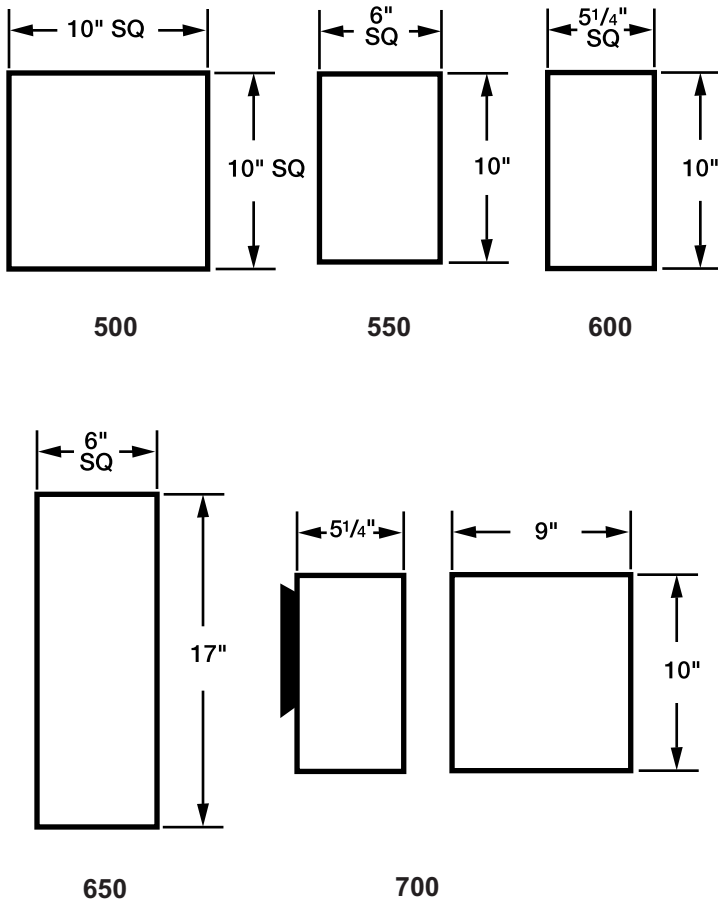
²C, W, or WE Base Mount Only, OW Lens Only

³W Base Mount Only, OW Lens Only

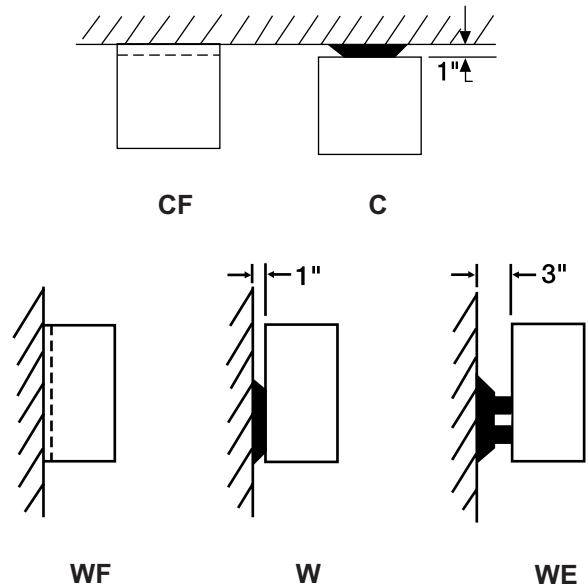
⁴558 and 658 are UL Listed for Damp Locations Using 1/8" Acrylic Material

⁵Provided By Others

Dimensions



Mounting



Specifications Subject to Change Without Notice

Luminaire is Warranted to be Free of Defects in Materials and Workmanship for One Year From Invoice Date.

MADE IN USA

WF Harris Lighting

Innovative Lighting Designs Since 1970

P.O. Box 5023, Monroe, NC 28111-5023, USA

(704) 283-7477 • (704) 283-6880(FAX) • (800) 842-9345(TOLL FREE)

www.wfharris.com • e-mail: info@wfharris.com

Printed in USA

Form 1549

09/07