

# FLUORESCENT



## 80 Series *Rustproof Vandal-Resistant Wall/Ceiling Luminaire* 42 Watts Maximum

Designed for indoor/outdoor uses where a softly shaped, stylish fixture is desired in areas subject to vandalism or harsh environments. **Rustproof.** Engineered with materials offering the **highest resistance to corrosion and impact.** The **polycarbonate** housing is **nonconductive** for safety during installations and relamping. Smooth exterior lens allows ease of cleaning and rounded corners provides increased impact strength and safety. Ideally suited as security or aesthetic lighting for the interior/exterior walls of commercial and industrial buildings, motels, apartments, parking areas, schools, hospitals, public housing and government installations.

### Specifications

**Lens:** Injection molded of UV-stabilized **polycarbonate.** Average thickness is 1/8". Smooth exterior surface for ease of cleaning, rounded corners for added impact strength and safety.

**Base Plate:** **Rustproof** .063" 5052 H-32 tempered marine-grade aluminum.

**Housing: (Optional)** Injection molded of UV-stabilized reinforced white or bronze **polycarbonate.** Rear knockout for supply wire. Available with up to four threaded connections and plugs suitable for 1/2" conduit. 32 and 42 PLT includes 80H housing.

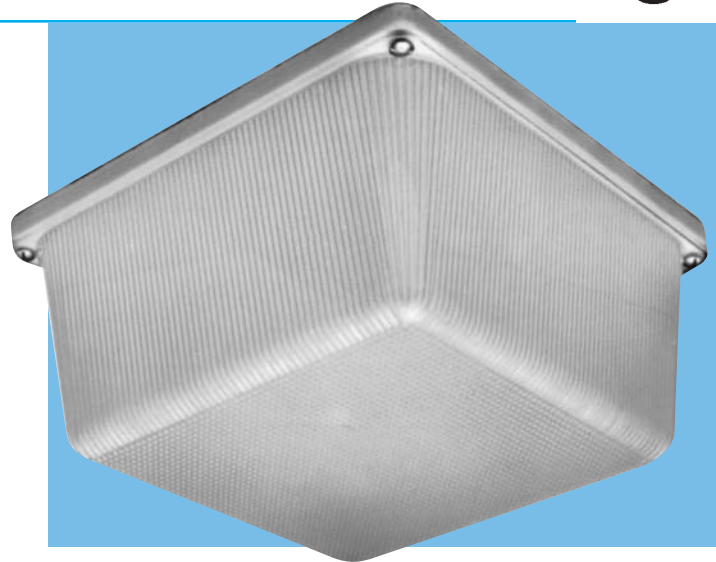
**Gasket:** Closed-cell neoprene rubber in 1/8" thickness creates a tight seal against contaminants. Required for Wet Locations and when Housing not supplied.

**Socket:** Four-pin and two-pin type. Leads insulated for 105°C.

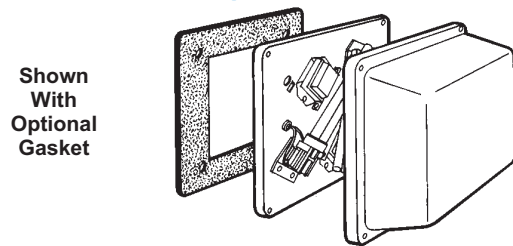
**Lamp: (Optional)** High-efficiency PL, PLT, 2D, and FL (circline) lamps offer up to 10 times longer life and 70% energy savings over incandescent lamps.

**Ballast:** Self-start preheat Normal Power Factor or High Power Factor for 120V or 277V. Optional cold weather (0°F) ballast(s) for PL Lamps. Optional Class P ballast for indoor use. 18W, 26W, 32W, and 42 Watt are standard 120V through 277V, 50/60Hz world class universal electronic, 0°F or better starting temperature.

**Hardware:** Four stainless-steel 8-32 phillips truss head screws or tamperproof screws (TORX® type) attach lens to base plate. Mounting hardware included.

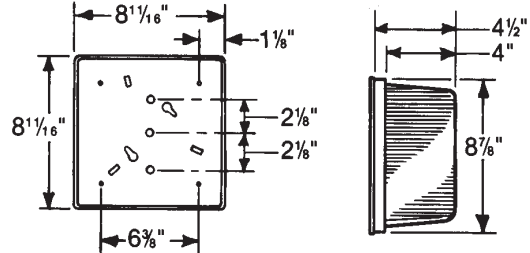


Exploded View

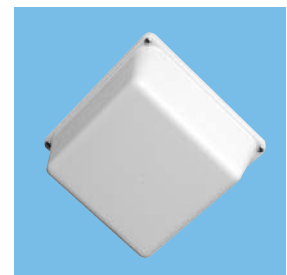


Shown With Optional Gasket

Dimensions



Shown With Optional Graphics



Shown With Opal White Lens

**UL and C-UL Listed For Damp or Wet Locations.**  
**CSA Certified For Indoor/Outdoor Use.**

All polycarbonate components meet Underwriters Laboratories 746C tests for polymeric material and carry a flammability rating of 94HB or better on lenses and the superior 94-5V rating on housings.

Luminaire Type \_\_\_\_\_  
 Catalog Number \_\_\_\_\_  
 Job Name \_\_\_\_\_  
 Approval \_\_\_\_\_

## WF Harris Lighting

Innovative Lighting Designs Since 1970

P.O. Box 5023, Monroe, NC 28111-5023, USA  
 (704) 283-7477 • (704) 283-6880(FAX) • (800) 842-9345(TOLL FREE)  
 www.wfharris.com • e-mail: info@wfharris.com

*"A Live Operator Company Standing Ready to Serve Your Lighting Needs"*

# FLUORESCENT

## Ordering Information (Fill In Blanks For Complete Catalog Number)

Model	Lens Color	Housing Color	Watts-Lamp	Power Factor	Volts	Options	Conduit Connection
Model	Lens Color	Housing Color	Watts/Lamp	Power Factor	Volts	Options	Conduit Connections
80	<b>CP</b> -Clear Prismatic <b>OW</b> -Opal White	<b>HW</b> -White <b>HB</b> -Bronze	7 PL 9 PL 13 PL 2-7 PL 2-9 PL 2-13 PL 18 PLT * 26 PLT * 32 PLT * <sup>4</sup> 42 PLT * <sup>4</sup> 21-2D *	<b>NPF</b> <b>HPF</b>	<b>120</b> <b>277</b> <sup>2</sup>	<b>LP</b> -Lamp <b>TPS</b> -Tamperproof Screws <b>WL</b> -Wet Location Gasket <b>FS</b> -Fuse and Holder <b>CW</b> -0°F Ballast For One PL Lamp <b>CW2</b> -0°F Ballast For Two PL Lamps <b>P</b> -Class P Magnetic Ballast <b>P2</b> -Two Class P Magnetic Ballasts <b>GRAPHICS</b> -Numbers, Symbols, Letters, Logos <b>PS</b> -Painted Sides (CP Lens Only) <b>PC</b> -Photo Control (80H Required) <b>GCO</b> -Grounded Convenience Outlet (80H Required) <sup>4, 5</sup> <b>SW</b> -On/Off Switch (80H Required) <sup>4, 5</sup> <b>80H</b> __-Housing. Please specify color <b>W</b> -White <b>B</b> -Bronze	<b>CRS</b> -Right Side <b>CLS</b> -Left Side <b>CT</b> -Top <b>CB</b> -Bottom <b>C4</b> -All Four Sides  (Positions Based on Facing Luminaire)

Wet Location EM - Consult Factory

\*Electronic

<sup>1</sup>Available in NPF-120V only

<sup>2</sup>Available in PL, PLC & PLT only

<sup>3</sup>EM Unavailable

<sup>4</sup>Requires 80H Housing

<sup>5</sup>Dry Locations Only

### Accessories (Order Separately)

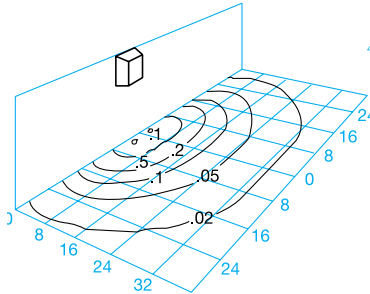
**TPT**-Tamperproof Screwdriver



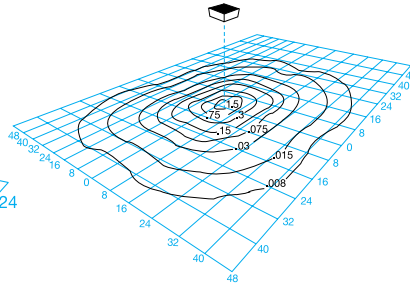
Specify **Emergency** Configuration from Emergency Sheet Form 1568

## Light Distribution Patterns

**Model 80-CP-2-9 PL**  
Wall Mounted 8' M.H.  
Produced From  
Test Report No. 32514



**Model 80-CP-20 FL**  
Ceiling Mounted 8' M.H.  
Test Report No. 32517



## Fluorescent Lamp Performance

	Input Watts	Lumen Output	Lamp Life (Hours)	Min. Starting Temperature
7 Watt PL	11W	400	10,000	0°F
9 Watt PL	13W	600	10,000	25°F
13 Watt PL	17W	900	10,000	32°F
(2) 7 Watt PL	22W	800	10,000	0°F
(2) 9 Watt PL	26W	1,200	10,000	25°F
(2) 13 Watt PL	34W	1,800	10,000	32°F
21 Watt 2-D	21W	1,350	10,000	14°F
18 Watt PLT	18W	1,200	10,000	0°F
26 Watt PLT	26W	1,800	10,000	0°F
32 Watt PLT	32W	2,400	10,000	0°F
42 Watt PLT	42W	3,200	10,000	0°F

## Conversion Tables

Lamp	Lamp Conversion Factor	Mounting Height	Height Conversion Factor
2-9 PL	1.00	6'	1.77
13 PL	.75	8'	1.00
2-7 PL	.67	10'	.64
9 PL	.50		
7 PL	.33		
2-13 PL	1.50		
18 PLT	1.00		
26 PLT	1.50		
32 PLT	2.00		
42 PLT	2.67		

### Using Conversion Table

TO ADJUST FOOTCANDLES (FC) SHOWN IN DIAGRAMS BELOW, USE FOLLOWING FORMULA WITH LAMP CONVERSION FACTOR (LCF) AND HEIGHT CONVERSION FACTOR (HCF):

$$FC \times LCF = FC \text{ with alternate lamp}$$

$$FC \times HCF = FC \text{ at alternate height}$$

$$FC \times LCF \times HCF = FC \text{ with alternate lamp at alternate height}$$

**LENS, HOUSING, AND ALUMINUM BASE PLATE CARRY A LIFETIME GUARANTEE.**

Specifications Subject to Change Without Notice.

Luminaire is Warranted to be Free of Defects in Materials and Workmanship for One Year From Invoice Date.

MADE IN USA

# WF Harris Lighting

Innovative Lighting Designs Since 1970

P.O. Box 5023, Monroe, NC 28111-5023, USA

(704) 283-7477 • (704) 283-6880(FAX) • (800) 842-9345(TOLL FREE)

www.wfharris.com • e-mail: info@wfharris.com

Printed in USA

Form 1552

09/07