

FLUORESCENT



300 Series *Rustproof Vandal-Resistant Wall/Ceiling Luminaire* 32 Watts Maximum

Designed for indoor/outdoor uses where efficiency and style must compete with abuse by environmental elements or vandalism. **Rustproof.** Engineered with components and materials offering the **highest resistance to corrosion and impact.** The **polycarbonate** housing is **nonconductive**, insuring more safety to the end user. A wide selection of colors and options adds to the versatility of this luminaire. Ideally suited as security lighting for homes, schools, motels, hospitals, condominiums and industrial, commercial and government buildings.

Specifications

Lens: Injection molded of UV-stabilized **polycarbonate.** Average thickness is $\frac{1}{8}$ ". Smooth exterior surface for ease of cleaning. Selections include Clear Prismatic, Opal White, and single-end trim finish in bronze or white with clear prismatic lens.

Base Plate: **Rustproof** .080" 5052 H-32 tempered marine-grade aluminum.

Housing: (optional) Injection molded in black, white, or bronze UV-stabilized, reinforced **polycarbonate.** Rear knockout for supply wire. Available with up to four threaded connections and plugs suitable for $\frac{1}{2}$ " conduit. PLC and PLT includes 3H housing.

Gasket: Closed-cell neoprene rubber in $\frac{1}{8}$ " thickness creates a tight seal against contaminants and moisture.

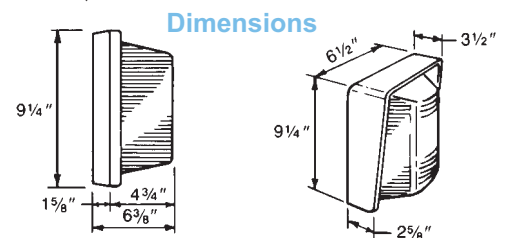
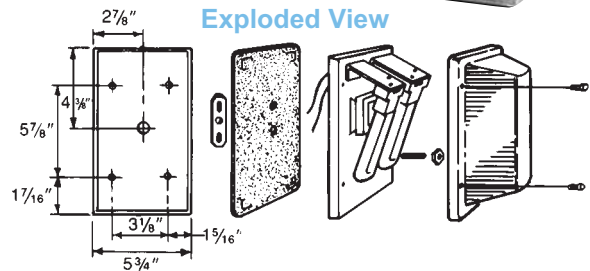
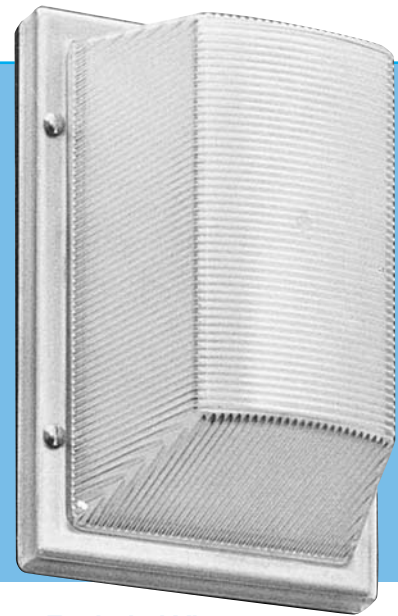
Socket: Two-pin and four-pin type with leads insulated for 105°C.

Lamp: (optional) High efficiency PL twin tube, quad tube, and PLT lamps offer up to ten times longer life and 70% energy savings over comparable incandescent lamps. **PLT 0°F minimum starting temperature.**

Ballast: Self-start preheat type in Normal Power Factor or High Power Factor for 120V or 277V. Optional Cold Weather (0°F) Ballast(s), and Class P Ballast(s) for indoor use. PLT standard with electronic.

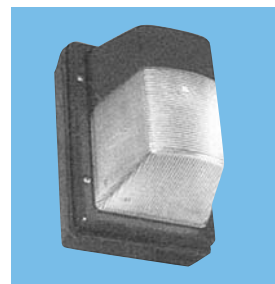
Hardware: Four stainless steel 8-32 phillips truss head screws or tamperproof screws (TORX® type) attach lens to base plate. Mounting hardware included.

Mounting: Ceiling. Wall **vertically with lamp base up.**

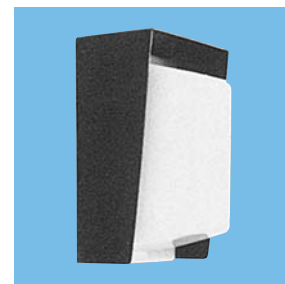


With Optional Housing

With Optional Decor Pack



Shown With 300-S Lens and Optional Housing



Shown With Optional Decor Pack

UL and C-UL Listed For Wet Locations.

All polycarbonate components meet Underwriters Laboratories 746C tests for polymeric material and carry a flammability rating of 94HB or better on lenses and the superior 94-5V rating on housings.

Luminaire Type _____
 Catalog Number _____
 Job Name _____
 Approval _____

WF Harris Lighting

Innovative Lighting Designs Since 1970

P.O. Box 5023, Monroe, NC 28111-5023, USA
 (704) 283-7477 • (704) 283-6880(FAX) • (800) 842-9345 (TOLL FREE)
 www.wfharris.com • e-mail: info@wfharris.com


"A Live Operator Company Standing Ready to Serve Your Lighting Needs"

FLUORESCENT

Ordering Information (Fill In Blanks For Complete Catalog Number)

Model	Lens Color	Trim Color	Housing Color	Watts-Lamp	Power Factor	Volts	Options	Conduit Connections
Model	Lens Color	Painted Lens Color	Housing Color	Watts/Lamp	Power Factor	Volts	Options	Conduit Connections
300	CP -Clear Prismatic	BK -Black	HK -Black ⁷	7 PL	NPF	120	LP -Lamp	CRS -Right Side
300-S⁴	OW -Opal White ³	BW -White	HW -White ⁷	9 PL	HPF⁵	277⁸	PC -Photo Control (3H Housing Required)	CLS -Left Side
	BZ -Bronze	BZ -Bronze	HB -Bronze ⁷	13 QD			3H _-Housing. Please Specify Color	CT -Top
	BY -Buglight Yellow			2-7 PL			K -Black W -White B -Bronze	CR4 -All Four Sides
	A -Amber			2-9 PL				(Positions Based on Facing Luminaire)
	R -Red			18 PLT ^{*1,4}			DPK -Decor Pack, Black Polycarbonate	
	G -Green			26 PLT ^{*1,4}			DPW -Decor Pack, White Polycarbonate	
	G -Blue			32 PLT ^{*1,4}			DPB -Decor Pack, Bronze Polycarbonate	
							GCO -Grounded Convenience Outlet (3H Required) ²	
							SW -On/Off Switch (3H Housing Required) ²	
							FS -Fuse and Holder	
							P -Class P Ballast For Indoor Use	
							P2 -Two Class P Ballasts for Indoor Use	

Accessories (Order Separately)

TPT-Tamperproof Screwdriver 

¹ Housing Included

² Dry Locations Only

³ Consult Factory for Availability and Pricing

⁴ Specify Painted Lens Color

BK (Black) WH (White) BZ (Bronze)

⁵ HPF Only

⁶ Positions Based on Facing Luminaire

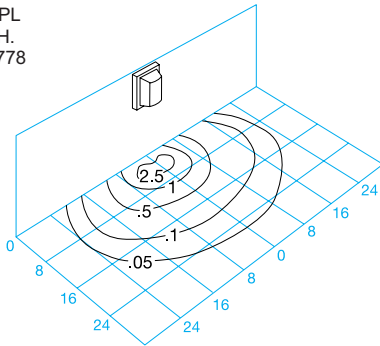
⁷ Housing Color Based on Painted Lens Color

⁸ 3H Housing Required

*Electronic

Light Distribution Patterns

Model 300-CP-2-9 PL
Wall Mounted 6' M.H.
Test Report No. 30778



Conversion Tables

Lamp	Lamp Conversion Factor(LCF)	Wall Mounting Height	Height Conversion Factor(HCF)	Ceiling Mounting Height	Height Conversion Factor(HCF)
2-9 PL	1.00	6'	1.00	7'	1.77
13 QD	.72	7'	.73	8'	1.00
2-7 PL	.67	8'	.56	9'	.79
9 PL	.50	9'	.44	10'	.64
7 PL	.33	10'	.36		
18 PLT	1.00				
26 PLT	1.50				
32 PLT	2.00				

Using Conversion Tables

TO ADJUST FOOTCANDLES (FC) SHOWN IN DIAGRAMS AT LEFT, USE FOLLOWING FORMULAS WITH LAMP CONVERSION FACTOR (LCF) AND HEIGHT CONVERSION FACTOR (HCF):

$$FC \times LCF = FC \text{ with alternate lamp}$$

$$FC \times HCF = FC \text{ at alternate height}$$

$$FC \times LCF \times HCF = FC \text{ with alternate lamp at alternate height}$$

Fluorescent Lamp Performance

	7 Watt Twin	9 Watt Twin	13 Watt Quad	(2) 7 Watt Twin	(2) 9 Watt Twin	18 Watt PLT	26 Watt PLT	32 Watt PLT
Input Watts	11W	11W	17W	22W	22W	18W	26W	32W
Lumen Output	400	600	860	800	1,200	1,200	1,800	2,400
Lamp Life (Hours)	10,000	10,000	10,000	10,000	10,000	10,000	10,000	10,000
Min. Starting Temp	0°F	25°F	32°F	0°F	25°F	0°F	0°F	0°F

Specifications Subject to Change Without Notice

Fixture is Warranted to be Free of Defects in Materials and Workmanship for One Year From Invoice Date.

MADE IN  USA

WF Harris Lighting

Innovative Lighting Designs Since 1970

P.O. Box 5023, Monroe, NC 28111-5023, USA
(704) 283-7477 • (704) 283-6880(FAX) • (800) 842-9345 (TOLL FREE)

www.wfharris.com • e-mail: info@wfharris.com

Printed in USA

Form 1553

09/07