

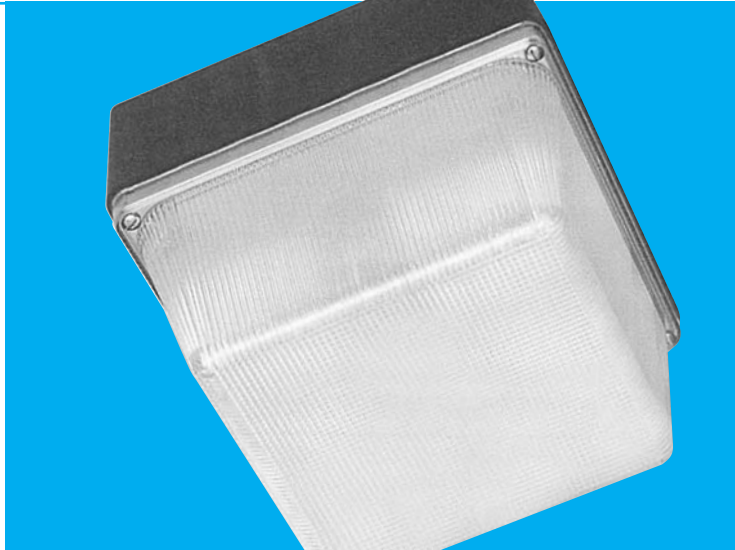
HPS-METAL HALIDE

80 Series
8 7/8" Square

*Rustproof Vandal-Resistant Ceiling Luminaire
High Pressure Sodium 70W Maximum;
Metal Halide 70W Maximum*



Designed for indoor/outdoor use where efficiency and style are as important as endurance to abuse by environmental elements or vandalism. Engineered with materials offering the **highest resistance to rust, corrosion, and impact**. The housing is non-conductive, insuring more safety to the end user. Smooth exterior lens allows ease of cleaning; clear prismatic interior assures optimum lumen output; rounded corners for increased strength. Ideally suited for schools, motels, apartments, parking areas, and commercial, industrial, and government establishments.



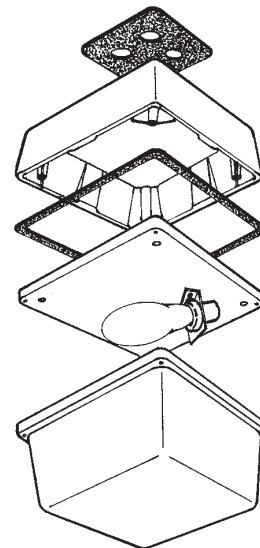
Specifications

Lens:	One piece, prismatic, injection molded of UV-stabilized polycarbonate . Average thickness is 1/8". Smooth exterior surface for ease of cleaning.
Base Plate:	Rustproof .063" 5052 H-32 tempered marine-grade aluminum.
Housing:	Injection molded of UV-stabilized reinforced bronze or white polycarbonate . Rear knockout for supply wire. Available with up to four threaded connections and plugs suitable for 1/2" conduit (specify connection positions).
Gasket:	Lens gasket and mounting gasket are closed-cell neoprene rubber.
Socket:	Medium-base phenolic. HPS and MH types are 4kV pulse rated.
Reflector:	Formed of anodized aluminum with specular finish.
Lamp: (optional)	Medium base, ED17.
Ballast:	MH and HPS type are Normal Power Factor (NPF) or High Power Factor (HPF) 120V or HPF 120/277V.
Hardware:	Four stainless-steel 8-32 phillips truss head screws or tamperproof screws (TORX® type) attach lens to base plate.

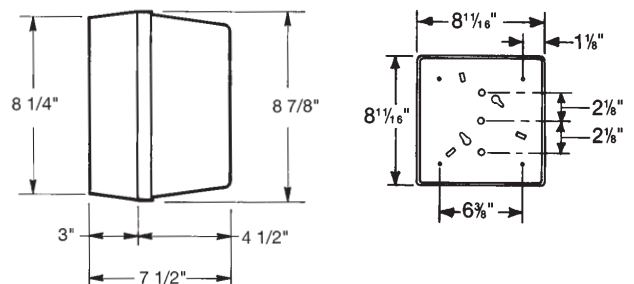
UL Listed For Wet Locations.

All polycarbonate components meet Underwriters Laboratories 746C tests for polymeric material and carry a flammability rating of 94HB or better on lenses and the superior 94-5V rating on housings.

Exploded View



Dimensions



Luminaire Type _____
 Catalog Number _____
 Job Name _____
 Approval _____

WF Harris Lighting

Innovative Lighting Solutions Since 1970

P.O. Box 5023, Monroe, NC 28111-5023, USA
 (704) 283-7477 • (704) 283-6880(FAX) • (800) 842-9345 (TOLL FREE)
 www.wfharris.com • email: info@wfharris.com

HPS - METAL HALIDE

Ordering Information (Fill In Blanks For Complete Catalog Number)

Model	Lens	Housing	Watts-Lamp	Power Factor	Volts	Options	Conduit Connection
Model	Lens	Housing	Watts/Lamp	Power Factor	Volts	Options	Conduit Connections
80	CP-Clear Prismatic OW-Opal White	HB-Bronze HW-White	50HPS 70HPS 50MH 70MH	NPF HPF 120/277	120 277	PC-Photo Control ¹ LP-Medium Base Lamp TPS-Tamperproof Screws FS-Fuse and Holder PS-Bronze Painted Sides 80H__-Housing. Please Specify Color B-Bronze W-White	CRS-Right Side CLS-Left Side CT-Top CB-Bottom C4-All Four Sides (Positions Based On Facing Fixture)

Accessories (Order Separately)

TPT-Tamperproof Screwdriver



¹Specify Voltage

**LENS, HOUSING, AND ALUMINUM BASE
PLATE CARRY A LIFETIME GUARANTEE.**

Specifications Subject To Change Without Notice

Luminaire Is Warranted To Be Free Of Defects In Materials
And Workmanship For One Year From Invoice Date.

MADE IN USA

WF Harris Lighting

Innovative Lighting Solutions Since 1970

P.O. Box 5023, Monroe, NC 28111-5023, USA
(704) 283-7477 • (704) 283-6880(FAX) • (800) 842-9345 (TOLL FREE)
www.wfharris.com • email: info@wfharris.com

Printed in USA
Form 1558 04/05