

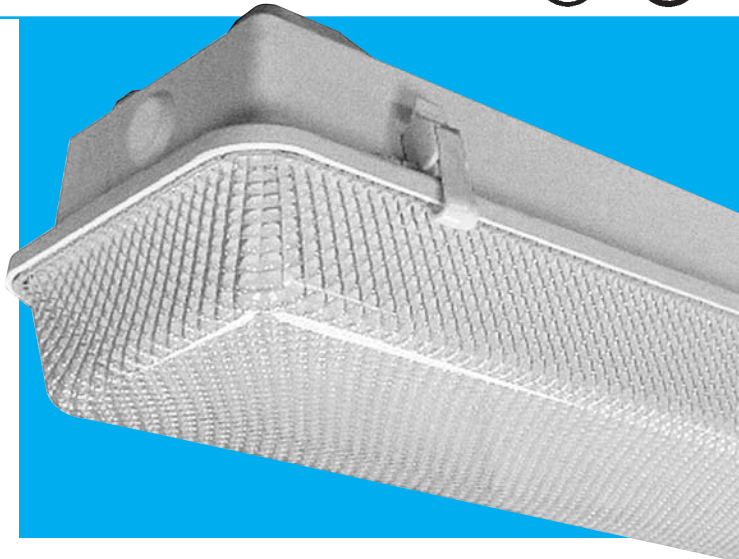
FLUORESCENT

RS Series

Rustproof Vandal-Resistant Ceiling and Wall Luminaire
120 Watts Maximum



Designed for wet or dry covered ceiling locations where efficiency, style, and endurance to environmental elements are as important as reducing installation time and cost. Rigid one-piece housing allows no flex during handling nor during installation. **Quality engineered to resist rust, corrosion, moisture, dust, and impact.** Smooth lens exterior for ease of cleaning, rounded corners for added strength, and prismatic lens interior for optimal light diffusion. The totally non-conductive housing insures more safety to the end user. Special U-shaped channel with non-shifting poured-in-place gasket allows the flanged lens to fit snugly for a continuous seal against moisture and dust. Ideally suited for kitchens, food processing facilities, schools and universities, parking garages, government and civic facilities, car washes, commercial and industrial facilities, marine and public areas.



Specifications

Lens: Vacuum-formed **polycarbonate**. Prismatic lens interior is engineered for maximum light control and diffusion; smooth exterior allows ease of cleaning; and rounded corners for additional strength. Edge is flanged to fit snugly into the gasketed retention channel for a continuous seal against moisture and dust.

Housing: Rigid one-piece compression-molded fiberglass reinforced polyester (self-extinguishing ASTM D635-74). Design and construction allows no flex during handling and installation, thus reduces the possibility for damage and decreases installation time and cost. Two $\frac{7}{8}$ " diameter end holes. White polyethylene molded end plugs snap lock in place to maintain tight seal of unused end holes.

Gasket: Continuous poured-in-place gasket completely fills the perimeter channel of the housing and snugly accepts lens flange for maximum seal integrity against moisture and dust. Gasket cannot separate, shift or fall out, thus reducing installation time and cost.

Mounting and Hardware: Two corrosion resistant brass 10-32 fixture mounting studs, molded into the housing, accept strip lighting fixture internally. External mounting brackets optional.

Lamp: (optional) Programmed start bi-pin provided for T5 High Output lamps. Either rapid-start bi-pin or 2G11 base sockets provided for others. Lamps, optional, as noted on reverse side under Watts-Lamp information.

Ballast: Electronic start, thermally protected class P, high power factor T5 ballast for 120V-277V, 50/60Hz, 0°F start. Magnetic and electronic start, thermally protected class P, high power factor ballast for 120V, 277V, 347V is 50°F. 0°F instant start ballast is standard for T-8 lamps and optional for others (note information on back). US product standard with energy-saving ballast.

Latching System: Standard with Models RS100 or RS200, are 2 or 3 pairs (respectively) of white injection molded high impact Celcon suitcase style latches that secure a positive seal between housing, gasket and lens. Special tamperproof stainless steel or polycarbonate latches available as a custom component.

UL Listed For Wet Locations.

C-UL Certified for Indoor/Outdoor Use.

USDA Certified for Food Area Applications.

NSF Certified for Non-Food Zone Applications.

The polycarbonate lens carries a flammability rating of 94HB or better.
The self-extinguishing fiberglass housing has the superior rating of SE-O.

Luminaire Type _____

Catalog Number _____

Job Name _____

Approval _____

WF Harris Lighting

Innovative Lighting Solutions Since 1970

P.O. Box 5023, Monroe, NC 28111-5023, USA

(704) 283-7477 • (704) 283-6880 (FAX) • (800) 842-9345 (TOLL FREE)

www.wfharris.com • email: info@wfharris.com

"A Live Operator Company Standing Ready to Serve Your Lighting Needs"

FLUORESCENT

Ordering Information (Fill In Blanks For Complete Catalog Number)

Model	Lens	Watts-Lamp	Power Factor	Volts	Options
RS-100	CP-Clear	<i>RS-100</i>	HPF	120	BRKT -Bracket Assembly Kit CW -0°F Ballast (N/A with EM1 or EM2 nor with PLL lamps) (Ballasts for T-8 lamps are standard 0°F.) EB -Electronic Ballast EM -(1 Lamp Luminaire) A single lamp (one) operates during normal conditions; the same lamp operates during emergency. EM -(2 Lamp Luminaires) Both lamps operate during normal conditions; one lamp operates during emergency. ² EM2 -(2 Lamp Luminaire) Two lamps operate during normal conditions; the same two lamps operate during emergency. ² EM0 -(1 Lamp Luminaire) One lamp operates only during emergency. ² EM01 -(2 Lamp Luminaire where only one lamp operates during any condition) One lamp operates during normal conditions; or the second lamp operates during emergency. ² EM02 -(2 Lamp Luminaire) Two (2) lamps only operate during emergency. FS -Fuse and Holder LPC -Polycarbonate Latch ^{3,4} LCWTP -Tamperproof Celcon Latch with #6-32x5/8" Tamperproof Screws ^{3,4} LPCTP -Tamperproof Polycarbonate Latch ^{3,4} LSS -Stainless Steel Latch ^{3,4} LSSTP -Stainless Steel Tamperproof Latch ^{3,4}
RS-200	Prismatic	2-20-FL-T12		277	
		2-40-PLL		347	
		2-17-FL-T8			
		2-24-FL-T5⁴			
		2-50-PLL*			
		1-17-FL-T8¹			
		1-20-FL-T12¹			
		1-54-FL-T5⁴			
		2-54-FL-T5⁴			
		<i>RS-200**</i>			
		2-40-FL-T12			
		2-32-FL-T8¹			
		1-32-FL-T8¹			

*Electronic

¹ Single Channel

² Emergency Not Available in RS-100 Model

³ Special Latches Available as Custom Components

⁴ Consult Factory for Availability

Accessories (Order Separately)

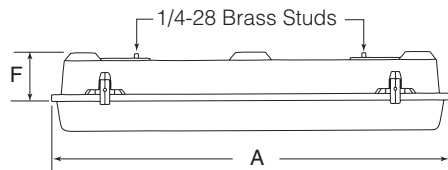
TPT-Tamperproof Screwdriver



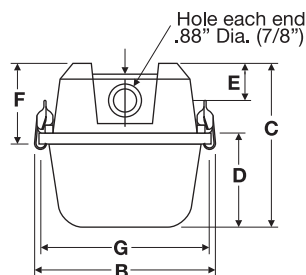
Dimensions (in inches)

Model	A	B	C	D	E	F	G	H	J	Latches
RS-100	25-15/16	7	5-3/16	2-1/8	1-1/2	3-3/16	6-5/8	17-1/2	14-3/4	4
RS-200	49-15/16	7	5-3/16	2-1/8	1-1/2	3-3/16	6-5/8	41-1/2	38-3/4	6

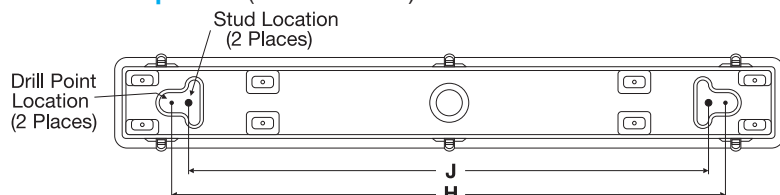
External Side View (Model RS-100)



External End View



External Top View (Model RS-200)



Specifications Subject to Change Without Notice

Luminaire is Warranted to be Free of Defects in Materials and Workmanship for One Year From Invoice Date.

MADE IN USA

WF Harris Lighting

Innovative Lighting Solutions Since 1970

P.O. Box 5023, Monroe, NC 28111-5023, USA

(704) 283-7477 • (704) 283-6880 (FAX) • (800) 842-9345 (TOLL FREE)

www.wfharris.com • e-mail: info@wfharris.com

Printed in USA
Form 1561 3/08